



Capabilities Statement

HANA Resources, Inc. is a full-service multidisciplinary environmental consulting firm that serves public and private sector clients throughout the United States. With its patented and proprietary technology, HANA applies scientific expertise, experience, initiative, and innovation to natural resource management. Our goal is environmental simplicity.

Core Competencies

HANA Resources, Inc. provides the following environmental consulting services:

CULTURAL RESOURCES

- ◆ *Cultural Resource Management*
- ◆ *Native American Consultation*
- ◆ *Preconstruction Surveys*
- ◆ *Construction Monitoring*
- ◆ *Historic Properties Evaluation*
- ◆ *NEPA / CEQA Compliance*
- ◆ *Phase One Surveys*
- ◆ *Records Searches*

BIOLOGICAL RESOURCES

- ◆ *Special-Status Species Permits and Surveys*
- ◆ *Botanical Services and Surveys*
- ◆ *Avoidance & Minimization Recommendations*
- ◆ *Fisheries and Aquatic Assessments*
- ◆ *Preconstruction Surveys*
- ◆ *Benthic Macroinvertebrate Bioassessments*
- ◆ *Environmental Permitting*
- ◆ *Habitat Restoration / Mitigation*
- ◆ *Construction Monitoring*
- ◆ *Documentation & Reporting*
- ◆ *CEQA / NEPA Analysis*
- ◆ *Incidental Take Permit / MSHCP Compliance*
- ◆ *Wildlife Recovery & Relocation*
- ◆ *California Rapid Assessment Method (CRAM)*
- ◆ *Wetland Assessment and Delineation*
- ◆ *Marine Sciences*

GEOGRAPHIC INFORMATION SYSTEMS

- ◆ *Impact Analysis*
- ◆ *Spatial Analysis*
- ◆ *GPS Data Collection and Warehousing*
- ◆ *Aerial Imaging and 3D Mapping*
- ◆ *Habitat Suitability Modeling*
- ◆ *Topographic and Watershed Analysis*
- ◆ *Interactive Web-applications*
- ◆ *Site and Resource Mapping*

SITE ASSESSMENTS/ WATER RESOURCES

- ◆ *Phase I Environmental Site Assessment*
- ◆ *Phase II Site Investigations*
- ◆ *Site Characterization / CSM*
- ◆ *RFA / RFI / CMS / CMI*
- ◆ *Groundwater Modeling*
- ◆ *Soil Sampling and Management*
- ◆ *Vapor Intrusion Modeling*
- ◆ *Documentation and Reporting*

DRONE SERVICES

- ◆ *Wildlife Monitoring System*
- ◆ *Water / Soil Collection System*
- ◆ *Thermal Imaging*
- ◆ *Normalized Difference Vegetation Index (NDVI)*
- ◆ *Plant Health Assessments*
- ◆ *Elevation Contour Mapping*
- ◆ *Habitat Diagnostic Modeling™*
- ◆ *Plant Species Recognition*

25 Years' Experience
(1995)

Prior Name Used:
The Sanberg Group, Inc.

Affiliate Company:
Natures Image, Inc.

Corporation Type:
S-Corporation

DUNS:
080961611

CAGE Code:
80F38

Certifications:
WOSB, WBE, SB-PW,
Federal SB

NAICS Codes:
541360, 541370, 541620,
541690, 541720, 115310

HANA Resources, Inc.
20361 Hermana Circle
Lake Forest, CA 92630

Contact Information:
Sloane Seferyn
Operations Manager
sloanes@HANAResources.com
(949) 648-4988

Website:
<http://HANAResources.com>

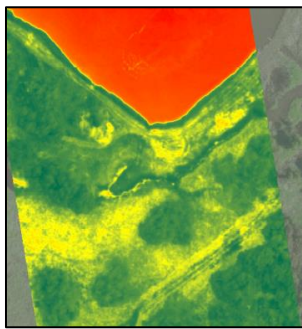


Facilities and Equipment

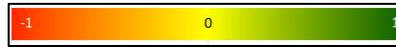
HANA Resources, Inc. owns a corporate facility and a fleet of specialty and technologically advanced drone systems with various capabilities, a complete line of specialized equipment designed for habitat restoration and maintenance projects. HANA has project management software tracking systems in place for controlling job costs, accounting, purchasing, and scheduling.

What Makes Us Different

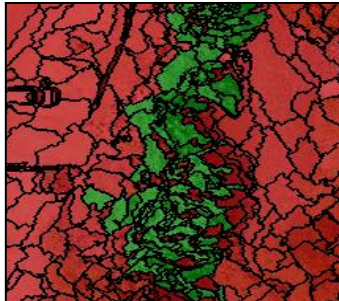
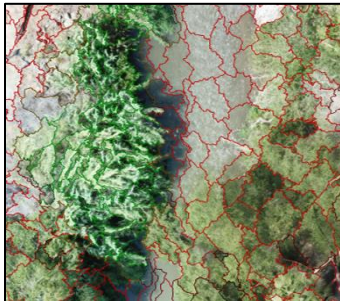
HANA is an industry leader in utilizing remote sensing to detect changes in vegetation on a habitat landscape scale. Our patented (U.S. Patent No. 9,984,455) and proprietary technology allows us to conduct *Plant Health Assessments* which includes plant height stratification, determining vegetation health and condition, and non-native species recognition. Results have been verified through ground-truthing and statistical measures.



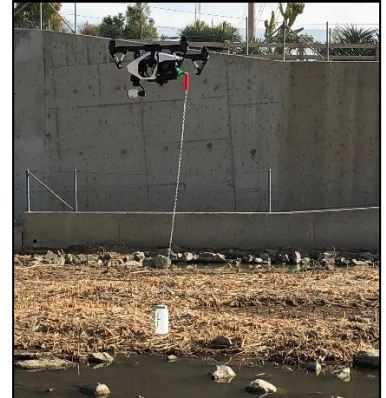
Value	Indication
<0	Inanimate/ dead material
0 – 0.33	Unhealthy plant material
0.33 – 0.66	Healthy plant material
>0.66	Very healthy plant material



HANA's patented and proprietary technology also enables us to conduct *Plant Species Recognition Assessments*, which allows us to map and determine density of individual plant species, native or invasive non-native plant species.



HANA's spatial accuracy is 0.6 inches per pixel resolution. HANA uses multispectral cameras on DJI unmanned aerial vehicle (UAV) platforms to collect data in various spectra and resolutions that is compatible with GIS and other remote sensing applications.



Recent Past Performance

- ◆ *Orange County Water District*
- ◆ *Irvine Company*
- ◆ *Aspen Environmental Group*
- ◆ *Southern California Edison*
- ◆ *Geocon West, Inc.*
- ◆ *Michael Baker International*
- ◆ *Bureau of Land Management*
- ◆ *JE Compliance Services, Inc.*
- ◆ *HDR*
- ◆ *Army Corps of Engineers*
- ◆ *Ascent Environmental*
- ◆ *LINC Housing Corporation*
- ◆ *National Park Service*
- ◆ *NAVFAC*
- ◆ *Kiewit*
- ◆ *U.S. Dept of Agriculture*
- ◆ *Caltrans*
- ◆ *Santa Ana Watershed Assoc.*
- ◆ *SBCTA*
- ◆ *University of California*
- ◆ *ICF*